

Insulation Guide

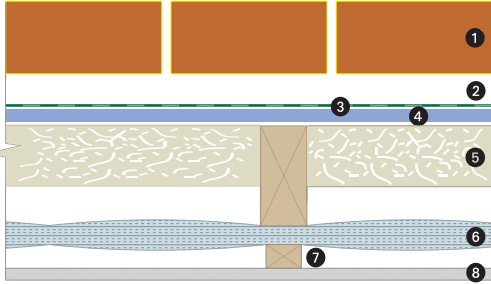
Timber frame



Ballytherm

Timber Frame (90mm) Stud Wall

Target U-Value 0.30W/m²K



Description	U-Value
Alumaflex and 30mm PIR (λ 0.022)	0.30W/m ² K
Alumaflex and 50mm Glass Wool (λ 0.035)	0.30W/m ² K

Key

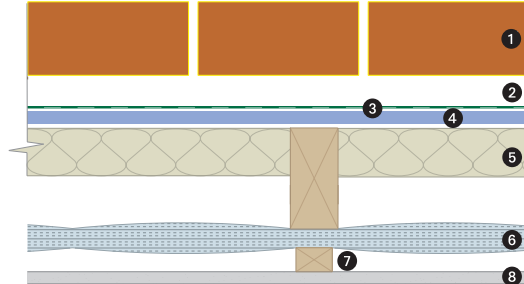
- 1 Brickwork
- 2 Air space
- 3 Breather Membrane
- 4 Sheathing
- 5 Glass wool batts
- 6 Alumaflex insulation
- 7 Timber batten
- 8 Magply board finish

Code 1 Level

CODE LEVEL GUIDE FOR Sustainable Housing **1** Part L1A U-Value 0.25 - 0.30 Private Housing 2008

Timber Frame (90mm) Stud Wall

Target U-Value 0.28W/m²K



Description	U-Value
Alumaflex and 35mm PIR (λ 0.022)	0.28W/m ² K
Alumaflex and 90mm Glass Wool (λ 0.038)	0.26W/m ² K

Key

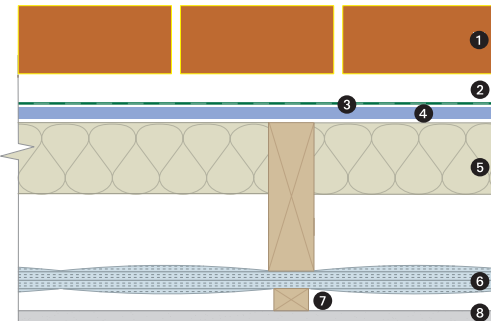
- 1 Brickwork
- 2 Air space
- 3 Breather Membrane
- 4 Sheathing
- 5 PIR
- 6 Alumaflex insulation
- 7 Timber batten
- 8 Magply board finish

Code 2 Level

CODE LEVEL GUIDE FOR Sustainable Housing **1 2** Part L1A U-Value 0.25 - 0.30 Private Housing 2008

Timber Frame (140mm) Stud Wall

Target U-Value 0.25W/m²K



Description	U-Value
Alumaflex and 50mm PIR (λ 0.022)	0.25W/m ² K
Alumaflex and 90mm Glass Wool (λ 0.035)	0.25W/m ² K

Key

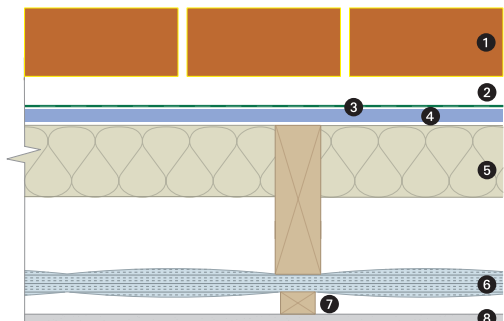
- 1 Brickwork
- 2 Air space
- 3 Breather Membrane
- 4 Sheathing
- 5 Glass wool batts
- 6 Alumaflex insulation
- 7 Timber batten
- 8 Magply board finish

Code 2 Level

CODE LEVEL GUIDE FOR Sustainable Housing **1 2** Part L1A U-Value 0.25 - 0.30 Private Housing 2008

Timber Frame (140mm) Stud Wall

Target U-Value 0.23W/m²K



Description	U-Value
Alumaflex and 70mm PIR (λ 0.022)	0.23W/m ² K
Alumaflex and 140mm Glass Wool (λ 0.038)	0.21W/m ² K

Key

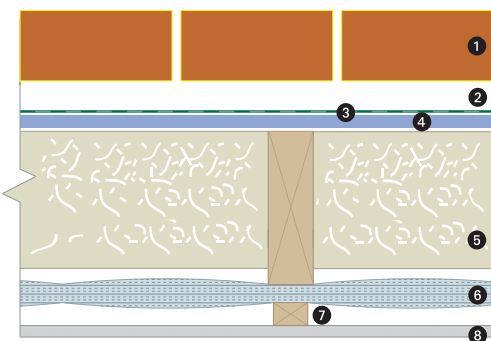
- 1 Brickwork
- 2 Air space
- 3 Breather Membrane
- 4 Sheathing
- 5 PIR
- 6 Alumaflex insulation
- 7 Timber batten
- 8 Magply board finish

Code 3 Level

CODE LEVEL GUIDE FOR Sustainable Housing **1 2 3** U-Value 0.20 - 0.23 Public Housing 2008 Private Housing 2010

Timber Frame (140mm) Stud Wall

Target U-Value 0.19W/m²K



Description	U-Value
Alumaflex and 90mm PIR (λ 0.022)	0.19W/m ² K
Alumaflex and 140mm Glass Wool (λ 0.035)	0.20W/m ² K

Key

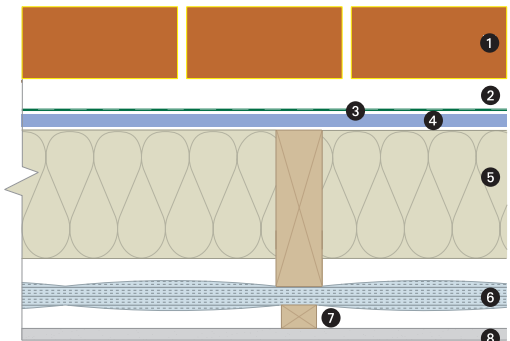
- 1 Brickwork
- 2 Air space
- 3 Breather Membrane
- 4 Sheathing
- 5 Glass wool batts
- 6 Alumaflex insulation
- 7 Timber batten
- 8 Magply board finish

Code 4 Level

CODE LEVEL GUIDE FOR Sustainable Housing **1 2 3 4** U-Value 0.17 - 0.19 Public Housing 2010 Private Housing 2013

Timber Frame (140mm) Stud Wall

Target U-Value 0.15W/m²K



Description	U-Value
Alumaflex and 100mm PIR (λ 0.022)	0.17W/m ² K
Alumaflex and 120mm PIR (λ 0.022)	0.15W/m ² K

Key

- 1 Brickwork
- 2 Air space
- 3 Breather Membrane
- 4 Sheathing
- 5 PIR
- 6 Alumaflex insulation
- 7 Timber batten
- 8 Magply board finish

Code 5 Level

CODE LEVEL GUIDE FOR Sustainable Housing **1 2 3 4 5** U-Value 0.14 - 0.16 Public Housing 2013

For more information please call: **01621 776252**

www.alumaflex.com



IPP Limited, Bradwell hall, Bradwell on Sea, Essex CM0 7HX
Telephone 01621 776252 Fax 01621 776688 Email sales@intpetro.com