

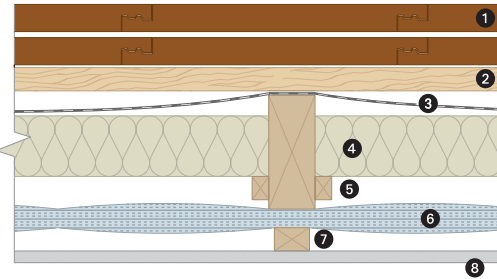
Insulation Guide

For Loft, Roofs and Walls



Alumaflex Below Rafter

Target U-Value 0.15W/m²K



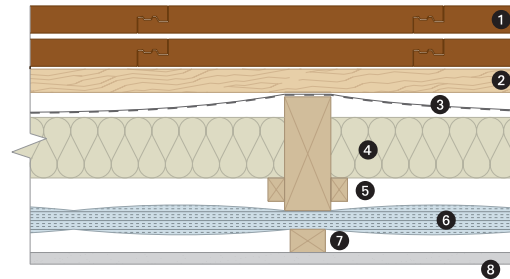
Key

- 1 Weatherproof covering
- 2 Tiling batten
- 3 Breather Membrane
- 4 PIR insulation
- 5 Support battens fixed to 200mm deep rafters
- 6 Alumaflex Insulation
- 7 Timber batten
- 8 Magply board finish

Description	U-Value
Alumaflex and 130mm PIR (λ 0.022)	0.15W/m ² K
Alumaflex and 200mm Glass Wool (λ 0.038)	0.17W/m ² K
Alumaflex and 100mm PIR (λ 0.022)	0.18W/m ² K

Alumaflex Below Rafter

Target U-Value 0.21W/m²K



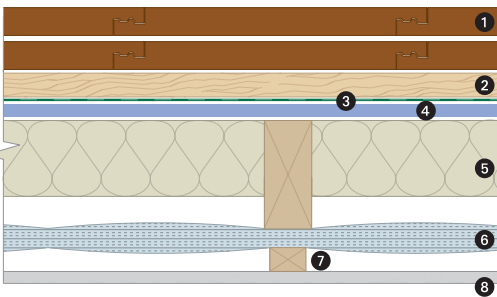
Key

- 1 Weatherproof covering
- 2 Tiling batten
- 3 Breather Membrane
- 4 PIR insulation
- 5 Support batten
- 6 Alumaflex Insulation
- 7 Timber batten
- 8 Magply board finish

Description	U-Value
Alumaflex and 70mm PIR (λ 0.022)	0.21W/m ² K
Alumaflex and 100mm Glass Wool (λ 0.038)	0.23W/m ² K
Alumaflex and 50mm PIR (λ 0.022)	0.23W/m ² K

Dormer Cheek - Alumaflex Inside Studs

Target U-Value 0.28W/m²K



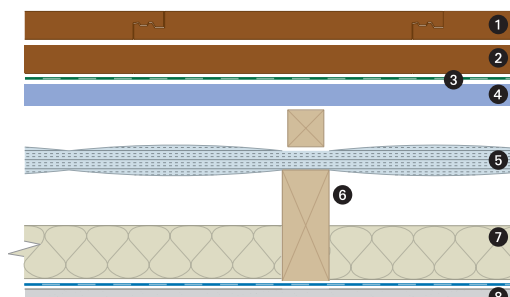
Key

- 1 Weatherproof covering
- 2 Tiling batten
- 3 Breather Membrane
- 4 Sheathing
- 5 PIR Insulation
- 6 Alumaflex Insulation
- 7 Timber batten
- 8 Magply board finish

Description	U-Value
Alumaflex and 50mm PIR (λ 0.022)	0.26W/m ² K
Alumaflex and 35mm PIR (λ 0.022)	0.28W/m ² K
Alumaflex and 50mm Glass Wool (λ 0.035)	0.30W/m ² K

Dormer Cheek - Alumaflex Outside Studs

Target U-Value 0.28W/m²K



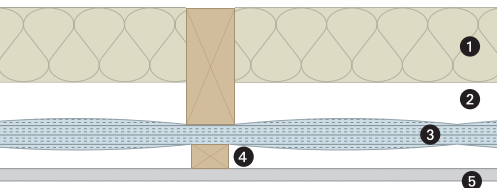
Key

- 1 Weatherproof covering
- 2 Tile batten
- 3 Breather Membrane
- 4 Sheathing
- 5 Alumaflex Insulation
- 6 75mm stud
- 7 PIR Insulation
- 8 Magply board & Vapour Barrier

Description	U-Value
Alumaflex and 50mm PIR (λ 0.022)	0.25W/m ² K
Alumaflex and 35mm PIR (λ 0.022)	0.28W/m ² K
Alumaflex and 50mm Glass Wool (λ 0.035)	0.30W/m ² K

Dwarf Wall - Alumaflex Inside Studs

Target U-Value 0.28W/m²K



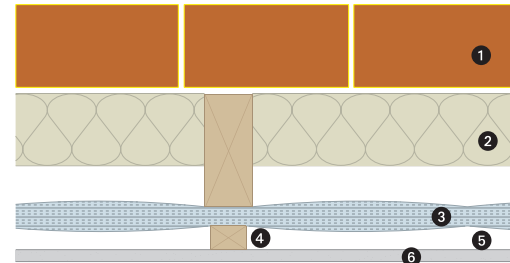
Key

- 1 PIR Insulation
- 2 Airspace
- 3 Alumaflex Insulation
- 4 Timber batten
- 5 Magply board finish

Description	U-Value
Alumaflex and 50mm PIR (λ 0.022)	0.26W/m ² K
Alumaflex and 40mm PIR (λ 0.022)	0.28W/m ² K
Alumaflex and 50mm Glass Wool (λ 0.035)	0.30W/m ² K

Masonry Wall - Alumaflex Inside Studs

Target U-Value 0.26W/m²K



Key

- 1 Masonry Wall
- 2 PIR
- 3 Alumaflex Insulation
- 4 Timber batten
- 5 Airspace
- 6 Magply board finish

Description	U-Value
Alumaflex and 60mm PIR (λ 0.022)	0.24W/m ² K
Alumaflex and 90mm Glass Wool (λ 0.038)	0.26W/m ² K
Alumaflex and 30mm PIR (λ 0.022)	0.30W/m ² K

For more information please call: **01621 776252**

www.alumaflex.com



IPP Limited, Bradwell hall, Bradwell on Sea, Essex CM0 7HX
 Telephone 01621 776252 Fax 01621 776688 Email sales@intpetro.com