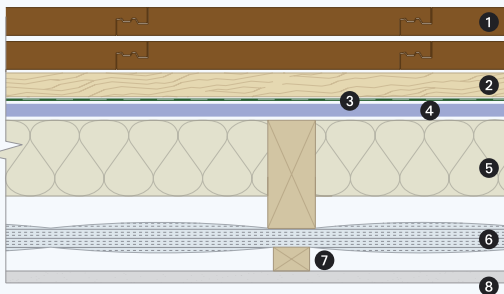


Dormer Cheek - Alumaflex and PIR

Target U-Value $0.20\text{W}/\text{m}^2\text{K}$

Key



- 1 Weatherproof covering
- 2 Tiling batten
- 3 Alumaflex Breather
- 4 Sheathing
- 5 30mm Ballytherm
- 6 Alumaflex Insulation
- 7 Timber Batten
- 8 Internal plasterboard finish