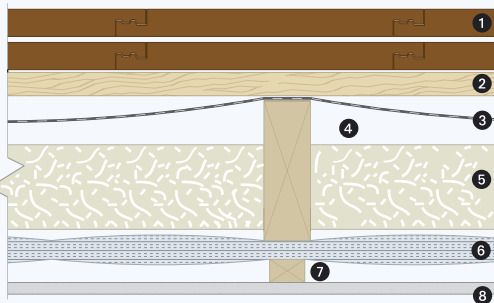


# Alumaflex below rafter with glass fibre

Target U-Value 0.20W/m<sup>2</sup>K

Key



- 1 Weatherproof covering
- 2 Tiling batten
- 3 Impervious underlay
- 4 25mm vented cavity
- 5 105mm glass fibre 0.032
- 6 Alumaflex insulation
- 7 Timber batten
- 8 Internal plasterboard finish