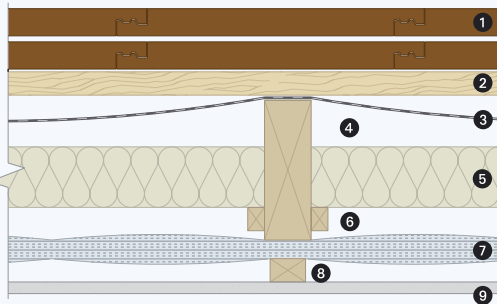


# Alumaflex below rafter with PIR

Target U-Value 0.20W/m<sup>2</sup>K

Key



- 1 Weatherproof covering
- 2 Tiling batten
- 3 Impervious underlay
- 4 25mm cavity
- 5 Ballytherm insulation  
60/70mm
- 6 Support battens fixed to  
150mm deep rafters
- 7 Alumaflex Insulation
- 8 Timber batten
- 9 Internal plasterboard finish