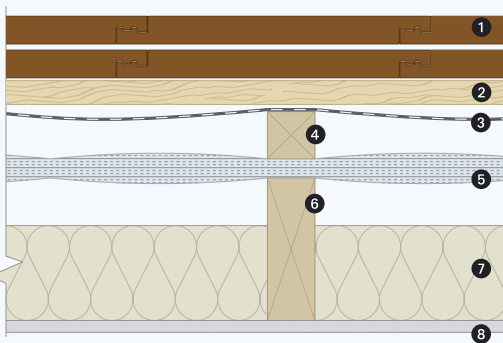


# Alumaflex above rafter with PIR insulation

Target U-Value 0.20W/m<sup>2</sup>K

Key



- 1 Weatherproof covering
- 2 Tiling batten
- 3 Alumaflex breather
- 4 50mm counterbatten
- 5 Alumaflex insulation
- 6 150mm deep rafter
- 7 Ballytherm insulation  
60/70mm
- 8 Internal plasterboard finish